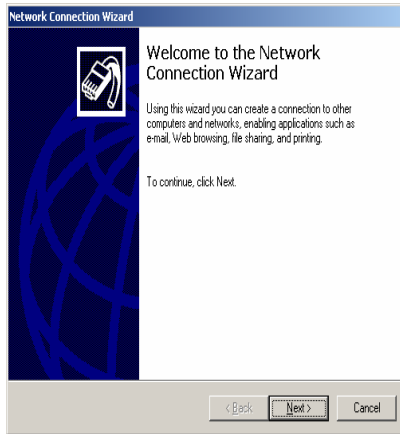


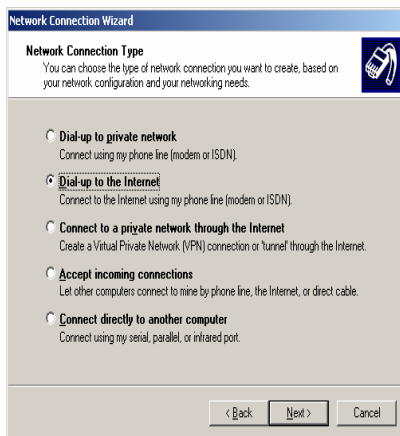
Dial in settings for Windows 2000



- Click “Start”
- Click “Settings”
- Click “Network and Dial-up Settings”
- Click “Next”

1

Dial in settings for Windows 2000



- Click on “Dial-up to the Internet”
- Click “Next”

2

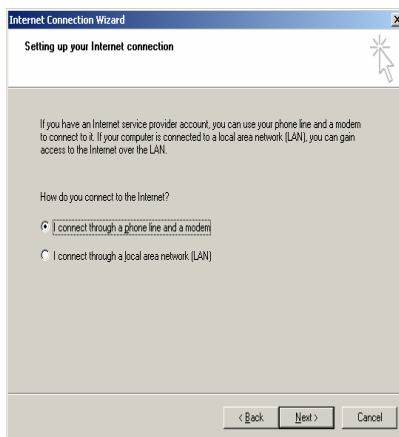
Dial in settings for Windows 2000



- Click on “I want to set-up my Internet connection manually ...”
- Click “Next”

3

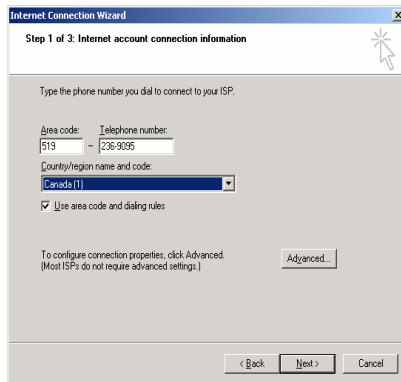
Dial in settings for Windows 2000



- Click “I connect through a phone line and modem”
- Click “Next”

4

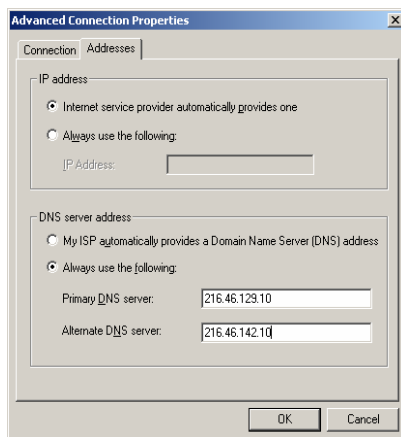
Dial in settings for Windows 2000



- The telephone number is:
519-236-9095 for Zurich customers
519-237-9095 for Dashwood customers
519-238-9095 for Grand Bend customers
- Click “Next”

5

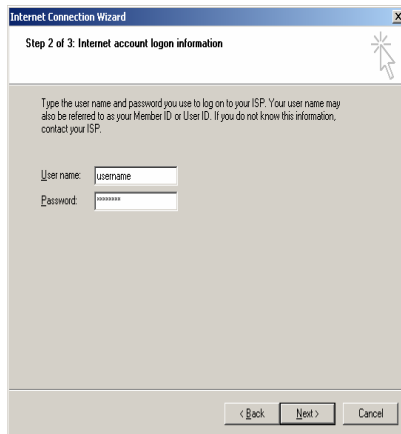
Dial in settings for Windows 2000



- Under IP address – make sure that the dot is beside “Internet service provider ...”
- Under DNS server addresses – make sure that the dot is beside “Always use the following”
- The primary DNS server number is 216.46.129.10
- The secondary DNS server number is 216.46.142.10
- Click “OK”

6

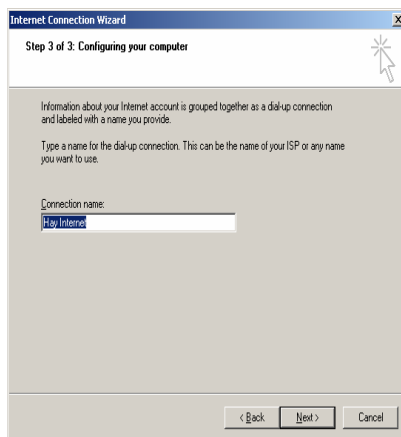
Dial in settings for Windows 2000



- Type in your username and password
- Click “Next”

7

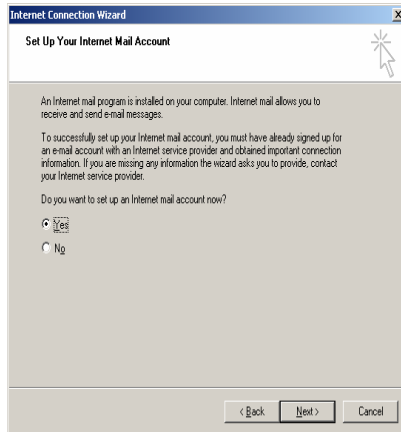
Dial in settings for Windows 2000



- The connection name can be “Hay Internet”
- Click “Next”

8

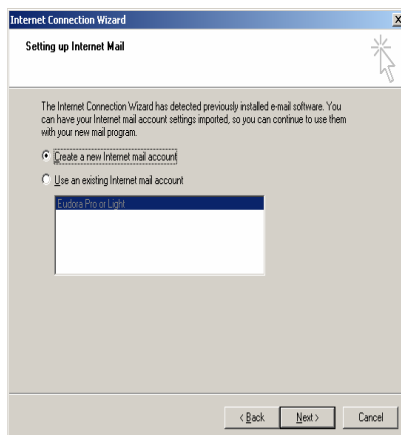
Dial in settings for Windows 2000



- You can set-up an email account now or later. If you choose to do it now click “Yes” and follow the forthcoming instructions. If you prefer to set the account up later, check “No”
- Click “Next”

9

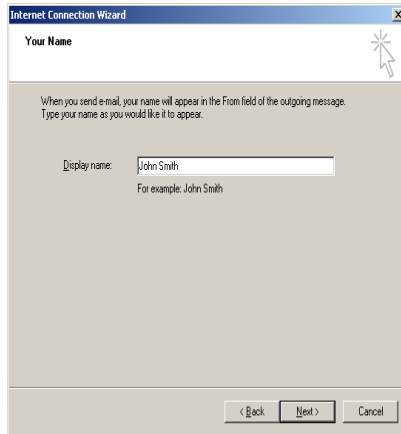
Dial in settings for Windows 2000



- Click “Create a new Internet mail account”
- Click “Next”

10

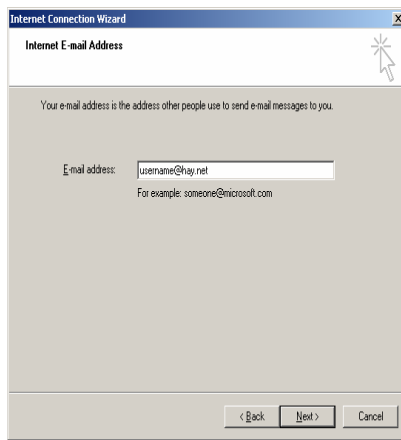
Dial in settings for Windows 2000



- Type your name or the display name that you wish in this box
- Click “Next”

11

Dial in settings for Windows 2000



- Type in your username@hay.net
- Click “Next”

12

Dial in settings for Windows 2000



The screenshot shows the 'E-mail Server Names' step of the Internet Connection Wizard. It features a dropdown menu for the incoming mail server type, currently set to 'POP3'. Below this are two text input fields: one for the incoming mail server (containing 'mail.hay.net') and one for the outgoing mail (SMTP) server (containing 'smtp.hay.net'). At the bottom, there are three buttons: '< Back', 'Next >', and 'Cancel'.

- The incoming mail server is a “POP3” server
- The incoming mail server is mail.hay.net
- The outgoing mail server is smtp.hay.net
- Click “Next”

13

Dial in settings for Windows 2000

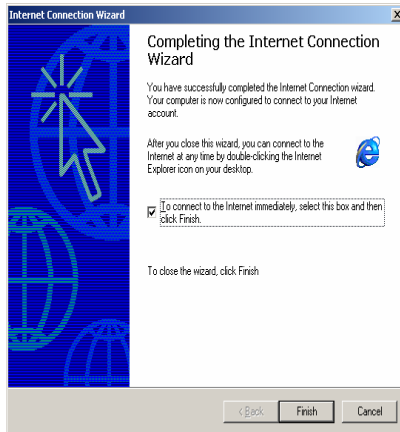


The screenshot shows the 'Internet Mail Logon' step of the Internet Connection Wizard. It prompts the user to enter their account name and password. There are two text input fields: one for the account name (containing 'username') and one for the password (containing 'password'). A checkbox labeled 'Remember password' is checked. Below these fields, there is a checkbox for 'Log on using Secure Password Authentication (SPA)' which is currently unchecked. At the bottom, there are three buttons: '< Back', 'Next >', and 'Cancel'.

- Fill in the boxes with the appropriate information
- Click “Next”

14

Dial in settings for Windows 2000



- Congratulations, you have finished setting up your dial-up account.
- Click “Finish”
- On the next screen click “Connect”

15

Technical Support

- Technical Support is available Monday to Friday 8:30 am to 10:00 pm and Saturday 9:00 am to 5:00 pm
- 519-236-4500
- 519-237-4500
- 519-238-4500
- assist@hay.net

16